



# North Worcestershire **Community Safety Partnership**

## Community Safety Partnership Project Review 2024

Bev Houghton  
Community Safety Manager  
[bev.houghton@bromsgroveandredditch.gov.uk](mailto:bev.houghton@bromsgroveandredditch.gov.uk)

# **NWCSP Responsible Authorities**

- **West Mercia Police**
- **Bromsgrove District Council**
- **Redditch Borough Council**
- **Wyre Forest District Council**
- **Worcestershire County Council**
- **Hereford and Worcester Fire and Rescue Service**
- **The Probation Service**
- **Redditch, Bromsgrove and Wyre Forest – Integrated Care Board (replacing Clinical Commissioning Groups)**

## Serious Violence Definition

Following consultation and discussion, this definition has been agreed by all five Community Safety Partnerships (CSPs) to represent serious violence within the counties of Worcestershire, Herefordshire, Shropshire and Telford and Wrekin.

### **West Mercia's definition of Serious Violence:**

*Violence, both physical and sexual, causing lasting psychological or physical harm, or where lasting harm was intended. This includes offences where there is an inherent threat of physical harm, such as county lines or offences involving use of an offensive weapon, blade or pointed article or any corrosive substance.*

To include:

- Violence with injury resulting in serious harm, with a threshold of Section 20 GBH
- Homicide including attempt murder
- Serious sexual harm – rape and sexual assaults
- Robbery
- Violence, including threats and aggravated offences, involving use of an offensive weapon, blade or pointed article or any corrosive substance
- Violence, including threats and aggravated offences, involving use of a firearm
- Offences with a county lines marker
- Violence with injury marked as domestic abuse
- Violence with injury marked as hate crime
- Modern slavery offences



## The Right Path Serious Violence Youth Project – Worcestershire

Using the Serious Violence Duty funding allocated to Worcestershire, NWCSP and SWCSP have commissioned the West Midlands youth mentoring and support organisation “The Right Path” to deliver intensive 1:1 mentoring that is specifically designed to support and guide young people who are at greater risk of criminalisation, those not accessing education and those at risk of permanent exclusion.

The project operates on a referral basis and details of the service have been circulated widely to Community Safety partners, schools and youth organisations across Worcestershire.

**£50,599**

### **Addressing PCC / NWCSP Funding Priorities**

- **Public Place Violence & Serious Violence Duty**
- **Protecting Vulnerable Communities**
- **Serious Organised Crime (CCE /CSE/ County Lines/Knife Crime Awareness)**

# NWCSP Core Funding 2024/25

Project	Grant Amount
West Mercia CSP Analyst Team (Top Sliced)	£20,000
West Mercia Integrated Offender Mgt. (Top Sliced)	£ 1,000
West Mercia Hate Crime Project (Top Sliced)	£10,838
West Mercia Crimestoppers Initiative (Top Sliced)	£ 2,000
Bromsgrove Detached, Outreach & Mentoring Youth Work	£13,000
Bromsgrove Tasking Projects	£11,472
Redditch Detached, Outreach & Mentoring Youth Work	£17,000
Redditch Tasking Projects	£12,470
Wyre Forest Detached Youth Team	£15,000
Wyre Forest Tasking Projects	£16,470
NW Domestic Homicide Reviews	£18,000
'Cut It Out' Domestic Abuse Awareness Training	£ 4,000
<b>Total</b>	<b>£139,250</b>

# Additional Safer Communities Funding 2024/25

Proposed Projects	Amount
<b>Bromsgrove &amp; Redditch Domestic Abuse Recovery &amp; Support Project</b> <p>In response to DARD (formally DHR) recommendations and concerns about gaps in existing delivery, the funding has commissioned a research professional to undertake a local mapping exercise and gap analysis in Bromsgrove and Redditch. This will identify exactly what local Domestic Abuse services are available and how accessible they are particularly, for diverse and minority communities. The project will also identify any geographical areas where additional support is required. In return for project engagement, small pots of funding will be made available to local grassroots organisations that run Domestic Abuse support activities and interventions for victims and survivors at a neighbourhood level.</p>	<b>£33,334</b>
<b>Bromsgrove &amp; Redditch Small Area Improvement Project</b> <p>Defined local areas have been identified for crime risk assessment and implementation of various target hardening, designing out crime interventions and local area enhancements. Initial scanning of the areas identified the locations to be prioritised for interventions with approximately £5,000 to £10,000 per area allocated to each small area improvement replicating the model of the previous Safer Streets 2 project in Woodrow. Redditch also has an additional £20,000 allocated through the UK Shared Prosperity Fund (UKSPF) to increase the number of areas that could be improved.</p>	<b>£33,333</b>
<b>Wyre Forest ASB &amp; Environmental Project</b> <p>Will provide additional resources to the existing WFDC team to address environmental crime and ASB, with a particular focus on community engagement and education. The funding will aim to deliver more preventative activity, rather than reactive enforcement, including work with schools and local communities.</p>	<b>£33,333</b>
<b>Total</b>	<b>£100,000</b>

# Safer Redditch – Tasking Fund 2024/25

Funded Projects	Amount
<p>Redditch Self Defence Youth Engagement Project – To provide support to young people and their families identified by professionals as being at risk of offending. The project will provide positive activities and help the young people referred in to make more positive lifestyle choices. Self Defence/Boxing training will be offered, with participants welcome to bring household members to train with if necessary. This can aid training and support students with anxiety issues. 2 free weekly sessions will be offered to any young person aged 13 to 19 and mentoring and guidance will also be offered during training.</p>	£4,900
<p>Contribution to purchase of 2 x Knife Poles for use at operations and interventions to tackle serious violence, knife crime and county lines. This will now provide a mobile Knife Detection facility in each area within the NWCSP areas</p>	£6,750
<p>Crime prevention resources, materials and communications</p>	£ 890
<b>Total</b>	<b>£12,470</b>

# Redeployable Camera Scheme

Redeployable cameras funded by the NWCSP grant between 2020 and 2023 are installed in areas of concern following an application and suitability assessment process coordinated by the CCTV Monitoring Centre team.

The CCTV Team always look to find ways to approve an application when it is received and reasons why installations may not progress include:

- No suitable mounting/power source/point available
- Significant privacy concerns
- RIPA required
- The requirement for a camera ceases to be a concern.

Applications that have been successful have been installed to combat ASB, drug taking, vehicle crime and vandalism.

Before each camera is installed a consultation document is posted to all surrounding properties covered by the proposed camera view. The response to these consultations is typically minimal, however, the process is a statutory requirement to comply with CCTV Codes of Practice.

District	No	Location	Install Date	Removal Date
RBC	908	Arrow Valley Country Park, by playground	20/02/2024	Now Permanent
RBC	912	Icknield Street Drive, Car Park (Redditch Skate Park)	24/09/2024	17/12/2024
RBC	914	West Avenue, Smallwood	18/07/2024	10/10/2024



# **Community Safety Project Updates**

**2024**



The Community Safety Respect Programme provides community safety awareness sessions as part of school PHSE drop down days and bespoke classroom sessions on various subjects such as recognising and reporting hate crime, understanding healthy relationships/domestic abuse, the dangers of substance misuse and promoting respect and community responsibility.

The programme also provides a therapeutic mentoring scheme which provides weekly support and guidance sessions to young people at risk of becoming victims or perpetrators of crime.

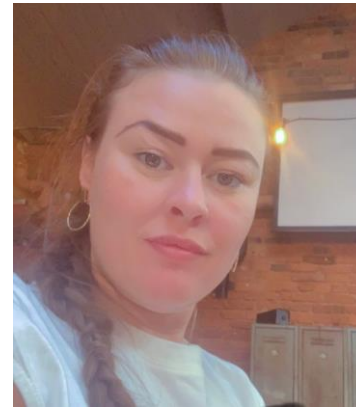
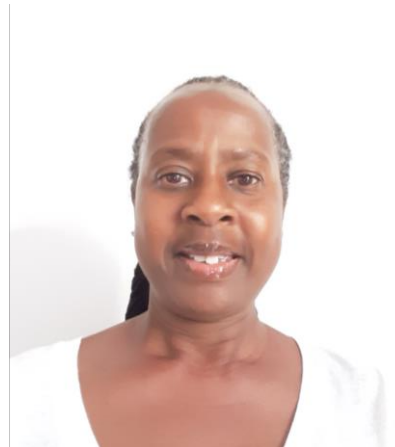
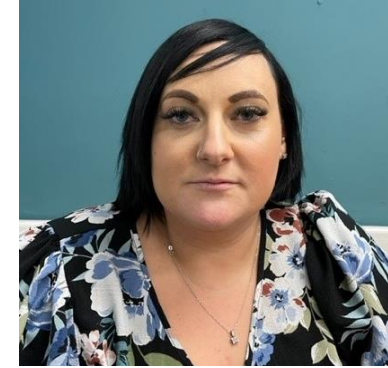
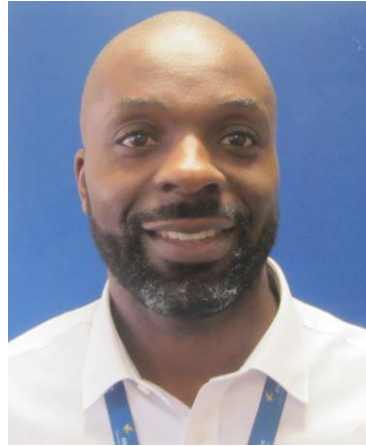
2024 saw continued growth in referrals to the service. The team receive between **40 to 60 referrals** each half term, with our team of mentors holding around **200 open cases** at any time.

The referrals into the programme continue to increase in complexity with support required for young people who are at a high level of need and are at serious risk of being affected by criminality, both as potential victims and potential perpetrators.



Following year-on-year increases in referrals to the Respect Programme, we have been very fortunate to be able to expand our current team of experienced, qualified mentors.

We now have a well-established team of youth workers who support the delivery of the Respect Programme across Redditch and Bromsgrove



# Community Safety Enhanced Youth Support Workers – Redditch

In 2021/22 the Council's Community Safety Team were successful in obtaining a 3-year Public Health grant of £83,837 pa from the Contain Outbreak Management Fund (COMF). This was then extended for a further year (2024-25) from the WCC Public Health Ring-fenced grant.

This funding has been used to provide dedicated youth workers in Redditch, working in partnership with Young Solutions Worcestershire. The focus for the youth workers is to provide outreach/detached support in identified areas of concern, to deliver Empowering Young People group work sessions and provide one to one mentoring to local young people at risk of being victims or perpetrators of crime and who have been detrimentally affected by the Coronavirus Outbreak.





# Redditch Youth Outreach

The Community Safety Team also works with local youth provider The UP Foundation to deliver outreach and detached youth sessions across the Borough.

Up Foundation youth teams patrol local neighbourhoods twice a week, depending on the weather. At the height of summer, workers engage with between 200 to 250 young people per month. This outreach delivery complements the Enhanced Youth Support team, who also deliver two sessions a week.

The Community Safety Youth Outreach Teams are now being seen as a model of best practice across the County. The achievements of these teams in delivering this type of on the ground, responsive youth provision directly led to discussions around reshaping the delivery of youth provision across Worcestershire. This has now been implemented through the Worcestershire District Youth Services Fund which is managed via the Community Safety Team in Redditch.



In May 2024, the Annual Redditch and Bromsgrove Young Citizen's Challenge (YCC) was held at the Bromsgrove Police and Fire Station from 20th – 24th May

YCC offers all Year 6 students from Redditch and Bromsgrove the opportunity to take part in a series of scenarios and take quizzes on what to do when exposed to different risks in various situations. Each partner-led session promotes experiential learning as each scenario is interactive and designed around student participation.

Alongside the Community Safety Team, partners such as the Police, Fire & Rescue Service, Safer Roads Team, SARA (Water Safety) and Western Power were in attendance to get across personal safety messages to Year 6 students. Community Safety Partners engaged with 843 young people throughout the week.

# YOUNG CITIZEN'S CHALLENGE





# Nominated Neighbour Scheme

The Nominated Neighbour Scheme aims to protect vulnerable residents from doorstep crime and rogue trader offences and continues to be a successful local initiative.

148 vulnerable residents are now signed up to the scheme, which is further promoted with partner agencies including Trading Standards and Age UK. Several presentations and promotional events have been delivered this year and during these events there have been over 125 positive engagements with residents who directly received advice and information about keeping safe from scams, rogue traders and other doorstep crime offences.

Training has also been provided to internal and external partners including Police to further extend the delivery of the scheme. The Community Safety team also monitors and circulates information on current national, regional and local scams that may target Redditch residents.



# Planning Consultations



Until recently, the Community Safety team had two College of Policing qualified, Designing Out Crime Officers (DOCO) who can review planning applications, making appropriate crime prevention and security recommendations with the aim of making future building developments less vulnerable to crime and disorder

During the reporting period, the Community Safety team scrutinised 27 planning applications. 9 of these were in Redditch comprising totals of 339 residential units and 2112 SqM of commercial space.



# Crime Risk Surveys 2024



## **Home Security Assessments**

The Community Safety team has carried out 40 Home Security Assessments at properties of residents vulnerable to crime with many households receiving upgrades and improvements to the physical security of their homes.

Some security assessments were made following discussions about the safety of domestic abuse victims held at MARAC meetings. Other assessments were carried out at the request of community safety partners such as the Police and other Council services such as the Neighbourhood & Tenancy team.

## **Domestic Abuse support including Sanctuary and MARAC (Multi-Agency Risk Assessment Conference)**

The Community Safety MARAC Officer attends the multi-agency conference which is a nationally recognised process for managing high risk domestic abuse cases. Vulnerable residents who are assessed as being at high risk of serious harm from a partner, ex-partner or a family member are referred into the MARAC process for the purpose of coordinating safeguarding activities across all organisations that can offer support and assistance. During 2024, 88 high risk and vulnerable Redditch residents were safeguarded via the MARAC process.

# Designing Out Crime



The Community Safety team carry out Environmental Visual Audits and Crime Risk Surveys at locations across the borough that are experiencing crime and ASB issues. During 2024, the team have completed 13 crime prevention surveys and environmental visual audits.

These surveys detail an overall strategy and specific interventions that can reduce criminal opportunities in areas where crime and the fear of crime are having a significant impact on the community.

Site visits carried out during 2024, some of which have led to improvements through the CSP funded Small Area Improvement Scheme include:-

- Sandhurst Close
- Icknield Street Drive Car Park
- St George's underpass
- Arrow Valley Lake



## Sandhurst Close – Before:



An overgrown area between Sandhurst Close, Church Hill Centre shops and the local schools was providing cover for drug use and associated ASB. This was causing fear of crime in the community, particularly amongst elderly residents who were afraid to use the adjacent footpath to access local shops and the bus route. This area has now been transformed into an open green space, and it has been reported that the community safety problems have been eradicated.

## Sandhurst Close – After:



# NWCSP Funded Knife Arch at Redditch Train Station



**05/03/2024**

Supporting West Mercia Police's Op Forefront

**10/05/2024**

Supporting national Operation Sceptre (knife and weapon education and zero tolerance week)

**13/05/2024**

Required for Operation Sceptre presence.



# NWCSP Personal Safety Event 18<sup>th</sup> May 2024



The Community Safety Team worked with key partners to host a personal safety event on the 18<sup>th</sup> May.

The team were joined by Spikes Bikes who gave out cycle safety advice and provided bike security marking.

The CSP also commissioned a Street Theatre company to engage with members of the public in a fun and informal way about personal safety and securing their property, issuing Crime Risk 'Red Cards' to people who were spotted with insecure or exposed property.

## Crime Risk Red Card

**Leaving valuables on show is  
an open invitation for thieves  
to steal them, they may  
distract you to do this!**



# Refugee Week 2024

---

The Community Safety Team supported partners at a community event at the Redditch Library on 29<sup>th</sup> June 2024.

This event provided security information and raised awareness of safety measures to members of our Ukrainian and other refugee communities.



# Arrow Valley Lake Green Fayre 7<sup>th</sup> July 2024

---

This event provided the Community Safety team with the opportunity to speak with residents about community safety issues and provide information and guidance on how to secure their personal property.



# RBC Housing Summer Roadshows

---

Throughout Summer 2024 the Community Safety team supported housing colleagues with their Resident Roadshows.

Residents were provided with community safety information and crime prevention advice including the promotion of the Nominated Neighbour Scheme to provide protection against Rogue Traders and Doorstep Scams.

16/07 – Crabbs Cross

18/07 – Church Hill

19/07 – Batchley

15/08 – Town Centre

19/09 – Woodrow

13/09 – Winyates

19/09 – Abbeydale

20/09 – Matchborough

26/09 - Lakeside





# Annual White Ribbon Domestic Abuse Campaign 25<sup>th</sup> Nov to 10<sup>th</sup> Dec

The 2024 White Ribbon campaign is currently underway and features various community events and social media promotion during the 16 Days of Action, all supported by community safety partners and local voluntary organisations.

On 6th December, the Community Safety team and partners will again host a publicity stand in Kingfisher Centre to support the campaign and promote the work of Domestic Abuse support services.

Alongside this in-person promotion, there will also be a strong social media campaign throughout the 16 Days of Action against Domestic Abuse.











# Safe Places Scheme

The Safe Places Scheme gives the elderly, people with a disability, illness or learning difficulty, or anyone who feels in danger; a range of safe places where they can go for help if they feel they are being bullied, abused or harassed while out and about.







All Safe Places are identified by this sticker and the organisation's employees receive training so that they can give reassurance and help people contact appropriate support, as needed.

A full directory of the Safe Places in Redditch is available here:- [Safe Places | Our Way Self Advocacy](#)



Directory of Safe Places 		
<b>Redditch</b>		
<b>Coffee #1</b>	Kingfisher Shopping Centre B97 4HJ	
<b>Age UK</b>	85 Mason Road Headless Cross B97 5DQ	
<b>Barclays Bank</b>	Kingfisher Shopping Centre B97 4HJ	
<b>Connect</b>	6 Evesham Walk B97 4EX	
<b>Emmanuel Church</b>	The Ecumenical Centre 6 Evesham Walk B97 4HJ	
<b>Kingfisher Reception</b>	Kingfisher Shopping Centre Walford House B97 4HJ	
<b>Palace Theatre</b>	Alcester Street B98 8AE	

<b>Redditch Borough Council</b>	Town Hall Walker Stanz Square	
<b>Shoppobility</b>	Kingfisher Shopping Centre Kingfisher Walk B97 4HJ	
<b>St Stephen's Church</b>	Church Green B97 4DY	
<b>The Library</b>	15 Market Place B98 8AR	
<b>Where Next Hub</b>	Unit 24 Millsborough House Ipsley Street B98 7AL	
<b>Where Next Nurseries</b>	Wellesbourne Close Easemore Road B98 8ER	
<b>Wilkinson</b>	Kingfisher Shopping Centre B97 4HJ	
<b>Batchley Support Group</b>	21/21a Salters Lane Batchley B97 6JY	

<b>Head of Wellbeing</b>	9 George Walk B97 4HB	
<b>Youth &amp; Community Enterprise</b>	The REDI Centre, South Street, B96 7DQ	
<b>Nesta' Café</b>	Kingfisher Shopping Centre B97 4HJ	
<b>Bono Tea Room</b>	Kingfisher Shopping Centre B97 4HJ	
<b>British Heart Foundation</b>	3 Market Place B98 8AA	
<b>The Wetherspoons Pub</b>	Unicorn Hill, B97 4QR	

# WCC Youth Services Funding

---

The Community Safety Team co-ordinates and manages the commissioning of the WCC Youth Services Fund in Redditch. This fund supports local youth providers to deliver activities and initiatives that give young people a safe place to meet and be supported by Trusted Adults.

Local Commissioned Organisations are:

## **Your Ideas**

- £7,500 for Joining It UP, Detached / Targeted / 121 Provision
- £9,793 for Art Club – Open Access, Spectrum Blue, Targeted Provision
- £9,793 for The Vibe, Open Access Provision

## **Unlocking Potential Foundation CIC**

- £7,500 for UP Mentoring Provision
- £9,793 for Open Access Provision

**YMCA** - £1565 for Open Access / Targeted / 121 Provision

**RYCE** - £11,470 for Open Access / Targeted / 121 Provision

**Arrow Vale Academy Youth Centre** - £5000 for Open Access / Targeted / 121 Provision